



WEXFORD WEEKLY WRAP-UP

MAY 10, 2024

JOIN 4-H

VOLUNTEER WITH 4-H

Week at a Glance:

Sat 5/11	Sun 5/12	Mon 5/13	Tue 5/14	Wed 5/15	Thu 5/16	Fri 5/17	Sat 5/18
4-H @ Single MOMM	<input type="checkbox"/> Mother's Day <input type="checkbox"/>	Wexford Whatevers (Animal) Club, 5 pm, FAIRGROUN DS	NDF Livestock Committee Meeting		Fair Board Meeting		Exploration Days Orientation, 2pm, The Pines Bowling



NORTHERN DISTRICT FAIR CADILLAC, MI

MARKET CHICKEN ORDERS DUE MAY 10TH

Youth Market Chicken projects must be ordered through the Northern District Fair Livestock Committee to be sold in the livestock auction. Exhibitors must enter a pen of 4 Broiler birds, with 3 selling at the auction, or a pen of 5 Cornish birds, with 4 selling at auction.

More details on the form:
NorthernDistrictFair.org/Youth



Bake Sale Success!

Thank you to everyone who helped to support our Bake Sale last weekend! We raised \$570 to support our 4-H clubs and programs! We had some very energetic members staffing the table and moving through the whole store to spread the word about our goodies!



Exploration Days Orientation: Saturday, May 18

Wexford County Exploration Days Orientation on Saturday, May 18 starting at 2 pm at The Pines Bowling Alley. We will start out with our orientation, then wrap up with pizza and bowling to get to know each other a bit. All costs are covered by the 4-H program. If possible, a parent/guardian should attend so everyone is on the same page.

HELP GROW STRONG LEADERS



**TSC TRACTOR
SUPPLY CO.**
TractorSupply.com

PAPER CLOVER IS BACK!
APRIL 24 – MAY 5

FUNDS SUPPORT 4-H CAMP, SCHOLARSHIPS AND LEADERSHIP ACTIVITIES.

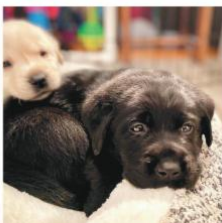
Tractor Supply Fundraiser is Underway!

April 24th kicked off our Spring Paper Clover Campaign at Tractor Supply Co. in Cadillac! Round up at the register to support growing the next generation of strong leaders in our community! Wexford and Missaukee County 4-H programs split the county portion of the proceeds and award youth scholarships to attend opportunities for leadership development. NOW EXTENDED TO MAY 12!



Raise a puppy. Change a life.

By being a volunteer puppy raiser, you and your family create life-changing moments, while helping a person who is blind or visually impaired regain independence.



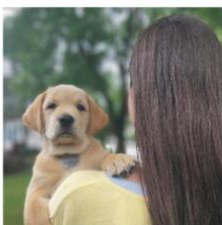
WHAT DOES A PUPPY RAISER DO?

- > Devote 12-15 months of your time, energy and love to raising a puppy
- > Provide daily care, such as feeding and walking
- > Teach basic commands based on Leader Dog guidelines
- > Introduce the puppy to a variety of people and environments
- > Receive tons of ongoing support from Leader Dogs for the Blind

There are multiple puppy raising options to fit your lifestyle.

ONE HOUSEHOLD

This traditional way to puppy raise is perfect for families, college students, active singles, retired couples and empty nesters.



CO-RAISING (PRIMARY AND SECONDARY RAISER)

This option is for someone who wants to share duties with a person from another household.



PASS-ALONG

One raiser has the puppy for the first six months and a second raiser has the puppy for the next six months.

- > Ideal for people who can commit only to a limited time raising a puppy
- > Individuals with pet weight/size restrictions or who may be more comfortable handling a younger, lighter dog can raise for the first six months, while individuals who prefer a dog that already has foundational behaviors may prefer raising the last six months.



CAMPUS PUPPIES

For college students raising on campuses approved by Leader Dog.

- > Must participate in campus puppy club and meet with assigned puppy counselor
- > All supplies, veterinary care and food paid by Leader Dog



To get more information, scan this QR code or visit LeaderDog.org and click on Volunteer.



LEADER DOGS
FOR THE BLIND®



Puppy Raisers Wanted!

Looking for a new way to give back to your community? Ready to try something new in your 4-H Dog project? Leader Dogs for the Blind is looking for puppy raisers! Participating families can select the time commitment that works best for them, including a 6 month program, 12-15 month program, or a co-raising program with another household! Your family can help a person who is blind or visually impaired regain independence, while creating life changing moments and growing in your 4-H Dog Program skills! For full details, please see the attached flyer or reach out to 4-H staff.

To help answer any questions you may have, we are hosting an informational zoom session with Question and Answer at 12pm EST on Saturday, May 18th. For other questions, or if you have accessibility needs, please reach out to Kat VanDouser at Krollkat@msu.edu or 517-552-6903.

[Register Here](#)

Animal Project Opportunities



SHEEP CLINIC
FEATURING: JENNA POHL DAVIS
JENNA IS A MICHIGAN NATIVE. SHE AND HER HUSBAND JESSE CURRENTLY LIVE IN MARYVILLE, MO WHERE THEY OWN AND OPERATE DAVIS SHOW LAMBS. BOTH GREW UP SHOWING LAMBS AT THE LOCAL, STATE AND NATIONAL LEVEL AND NOW ARE PASSIONATE ABOUT HELPING THE NEXT GENERATION ACHIEVE THEIR GOALS.

TOPICS

- BREAK DOWN OF SHOW DAY PREPARATIONS, LEG WRAPS, HAIR PILLS, DRENCHES, ETC.
- ADVANCED SHOWMANSHIP TECHNIQUES AND INSIGHT TO THE LATEST TIPS & TRICKS
- CUSTOMIZED FEED AND NUTRITION FOR YOUR INDIVIDUAL LAMB. BRINGING SHEEP PREFERRED BUT NOT REQUIRED

JUNE 22, 2024
9AM-3PM | MISSAUKEE AGRICULTURAL YOUTH SHOW, FALMOUTH MI

FEES:
REGISTRATION BY MAY 11, 2024 \$50.00
LATE REGISTRATION MAY 12, 2024 - JUNE 20, 2024 \$75.00

ANY SPECTATORS NOT ACCOMPANYING A REGISTERED EXHIBITOR, WILL NEED TO PAY A 15.00 SPECTATOR FEE. SPECTATOR FEE CAN BE PAID THE DAY OF THE EVENT. IF WE DO NOT HAVE 20 REGISTERED EXHIBITORS BY MAY 11, 2024 THE CLINIC WILL BE CANCELED & REFUND ISSUED.

MISSAUKEE COUNTY FAIR EXHIBITORS WILL GET 25.00 SCHOLARSHIP FROM MAYS, TO HELP COVER COST.

REGISTRATION NEEDS TO BE PAID TO MISSAUKEE AGRICULTURAL YOUTH SHOW (MAYS). IT CAN BE PAID AT QR CODE OR MAIL A CHECK TO P.O BOX 94, FALMOUTH, MI 49632. YOUR REGISTRATION IS NOT COMPLETE UNTIL WE RECEIVE PAYMENT.

REGISTER AT <https://v2.4online.com/#/user/sign-in> OR USE QR CODE

ANY QUESTIONS CONTACT SUE BEERENSS @ 231-610-8701 OR BEERENSS@MSU.EDU

Clinic brought to you by: Davis show Lambs, Missaukee Agricultural Youth Show, McBain Grain-Purina and Missaukee 4-H

MSU IS AN AFFIRMATIVE-ACTION, EQUAL-OPPORTUNITY EMPLOYER. COMMITTED TO ACHIEVING EXCELLENCE THROUGH A DIVERSE WORKFORCE AND INCLUSIVE CULTURE THAT ENCOURAGES ALL PEOPLE TO REACH THEIR FULL POTENTIAL. MICHIGAN STATE UNIVERSITY EXTENSION PROGRAMS AND MATERIALS ARE OPEN TO ALL WITHOUT REGARD TO RACE, COLOR, NATIONAL ORIGIN, GENDER, GENDER IDENTITY, RELIGION, AGE, HEIGHT, WEIGHT, DISABILITY, POLITICAL BELIEFS, SEXUAL ORIENTATION, MARITAL STATUS, FAMILY STATUS OR VETERAN STATUS. PERSONS WITH DISABILITIES HAVE THE RIGHT TO REQUEST AND RECEIVE REASONABLE ACCOMMODATIONS.

4-H GROWS HERE



BIOSECURITY PRACTICES
MICHIGAN STATE UNIVERSITY | Extension

PROTECT YOUR ANIMALS FROM DISEASE

- Wear clean clothing & footwear while caring for animals
- Regularly clean & disinfect tools & equipment used on the farm
- Limit visitors to your farm
- Separate new animals for 14 days & monitor for symptoms of illness
- Care for new, separated, or sick animals last

Recently, highly pathogenic avian influenza (HPAI) has been detected in cattle, cats and commercial poultry flocks across the country and Michigan. MSU Extension and its state partners are continuing to monitor the situation and providing outreach to help mitigate the spread of HPAI. Livestock and poultry owners are strongly encouraged to take proactive measures to defend against additional outbreaks in Michigan. Check out the following resources helpful information on biosecurity:

- [How you can reduce biosecurity risks in 4-H projects \(8 part series\)](#)
- [Biosecurity for Dairy and Beef Cattle Farms](#)
- [Remain Vigilant to Protect against HPAI](#)
- [Avian Influenza](#)

NORTHERN DISTRICT FAIR CADILLAC, MI

NORTHERN DISTRICT FAIR REMINDERS:

- All market projects are required to complete a record book while raising the animal. This can include photos and weights from day 1, so be sure to look at your record books now: [NDF Record Books](#)
- 4-H fitting and showmanship guides explain the steps to showing the animal for judging and are available on our website for those looking to practice: [About Wexford 4-H - Wexford County \(msu.edu\)](#)

NDF Youth Department

Teen Topics

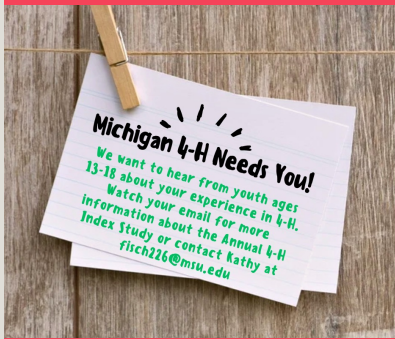
Starting this Summer! Wexford 4-H Teen Committee

Wexford 4-H Members ages 13-19 are invited to join the new teen committee of the Leaders Council!

What teens will do:

- plan fun events for 4-H families to meet each other
- help the 4-H leaders understand what teens in our communities want
- learn how groups work together to make decisions and keep records
- help direct the 4-H program into the future, like ideas for fundraisers
- act as role models for younger 4-H'ers to look up to
- represent 4-H at community, statewide, and national events

Email Kate to Join



2024 ADULTING 101

- THE PSYCHOLOGY OF SPENDING & SAVING - JANUARY 17 AT 6 PM
- FOSTERING HEALTHY RELATIONSHIPS - FEBRUARY 12 AT 5 PM
- KEEPING YOUR MONEY SAFE - MARCH 19 AT 6 PM
- COVER LETTER AND RESUME WRITING - APRIL 10 AT 6 PM
- BUILD AND PROTECT YOUR CREDIT - MAY 15 AT 5 PM
- TRAVELING ON A BUDGET - JUNE 6 AT 6:30 PM
- COOKING BASICS - JULY 16 AT 4 PM
- SUMMER BERRIES: JAM AND JELLY - AUGUST 12 AT 4 P.M.
- CHANGING THE WORLD WITH YOUR VOTE - SEPTEMBER 16 AT 5 PM
- PAYING FOR POST-SECONDARY EDUCATION - OCTOBER 16 AT 5 PM
- CRACKING THE CODE TO COLLEGE - NOVEMBER 19 AT 5 PM

<https://events.anr.msu.edu/Adulting2024/>

Registration is now open! 4-H Great Lakes and Natural Resource Camp!

When? July 28-Aug 3, 2024

Where? Camp Chickagami, Presque Isle

<https://www.anr.msu.edu/4-h-great-lakes-natural-resources-camp/>

MICHIGAN STATE UNIVERSITY Extension

Feedback Wanted

Michigan 4-H is looking for feedback from youth ages 13-18 regarding their experience in 4-H. You will be receiving a survey and information in your email through 4-H Online. Please take some time to help us improve Michigan 4-H and our county programs by completing the survey. The survey can be accessed here or from the email you will receive. For questions, contact Kathy Fischer at fisch226@msu.edu.

Take the Survey

Adulting 101: Build & Protect Your Credit

May 15 | 5 PM

Learn why your credit matters, how to start obtaining credit and how to manage it.

Adulting 101

Great Lakes & Natural Resources Camp

Registration Open! July 28-August 3 | Presque Isle County

Young teens have fun and amazing outdoor hands-on learning experiences as they go charter fishing, snorkeling, sailing, hike through forests, wade through wetlands, explore dunes and more! Camp will be held at Camp Chickagami in Presque Isle, on the shores of Lake Esau. This year's camper fee is \$500 per camper and includes 6 nights of lodging, all meals and snacks, a t-shirt, and experiential learning. Camper age is 13-15 and they do not need to be a 4-H'er to attend. **Wexford County scholarships available to assist with costs.*

Learn More

Volunteer Vault

VOLUNTEER WITH WEXFORD 4-H

Your time and talents can make a big impact!

www.canr.msu.edu/wexford

231-779-9480

MSUE.Wexford@msu.edu

@Wexford4H



MICHIGAN STATE UNIVERSITY Extension



4-H GROWS HERE



Apply to Volunteer

Start a New Club: Babysitting

Wexford County 4-H has hosted several short-term babysitting training programs over the last few years. Many of these members would be interested in a club they can join after the training to keep learning as they start their babysitting businesses. Requires 6 meetings over the year on your schedule.

Take Over an Existing Club: Sewing Club

Wexford 4-H is seeking 2 volunteers with sewing experience to assist and/or lead sewing club meetings in the coming year. Our club is very popular and could expand in the near future. We have many supplies waiting to be used, a class set of machines, and many resources available to support volunteers.

Start A Short-term Club: Self-Defense

Would you be interested in teaching teens about personal safety, situational awareness, self-defense, and mental and physical health? We have interest in a summer club geared towards teens that are going off to college. Requires 6-8 meetings on your schedule.

To learn more about volunteering, contact Kate:
Kingka26@msu.edu | 231-779-9480

4-H Volunteer Webinar Series



Join Michigan 4-H on May 13 at Noon or 7pm for Preparing 4-Hers for Fairs and Showcases. As summer approaches, there are many opportunities for youth to showcase their skills and knowledge. 4-H volunteers have an important role in helping youth develop their interview skills, public speaking, presentation, and leadership skills as they participate in a variety of events and activities.

Upcoming sessions:

- Preparing for Fair, May 13
- Managing Risks, May 22

Each session is offered at noon and at 7 pm. Registration and recordings are available through the link below.

Webinar Series

4-H Foundation Opens 24-25 Grant Cycle

Awarded annually, the Michigan 4-H Foundation recently opened their grant and award opportunities for the 2024-2025 season. Open to 4-H volunteer leaders, members and staff, the grants and awards support local 4-H clubs and county programs, as well as recognize members of the 4-H community. **All applications are due June 1.** Opportunities include:

- **Michigan 4-H Legacy Grants of \$1,000.** These grants

are awarded to support development of a new program or initiative or to strengthen, enhance or expand a current program that is making a difference.

- **4-H On-Target Grants of \$500.** These grants support 4-H Shooting Sports programs to enhance existing programs, develop a new program or offer a special experience related to 4-H Shooting Sports.
- **The Collins 4-H Youth Horticulture Grant of \$500.** This grant is available only to 4-H youth clubs and supports advancement of club work in plant science and horticulture activities.
- **4-H Educational Garden Grants of \$1,000.** These grants support the creation of local 4-H educational gardens in Michigan.
- **Michigan Farm Bureau 4-H Excellence in Agriculture Award (includes \$1,000 grant).** This award recognizes outstanding 4-H agricultural volunteers that have exhibited excellence in 4-H youth education and leadership development.



Grant Application

4-H Alumni & Supporters

Walking Challenge

Starting May 5th!
Get those walking shoes ready
Register soon for a chance to earn prizes for your county 4-H program!
Prizes sponsored by Michigan 4-H Foundation



4-H Alumni & Supporters Walking Challenge

Starting May 5th, MSU Extension will host another 4-H Alumni & Supporters Walking Challenge, where participants will track their miles walked and compete for a top spot in the contest! Each week, top contestants will win a 4-H swag prize and the county who logs the most miles throughout the whole challenge will earn a \$100 cash prize for their county 4-H program! Random weekly winners will also be chosen amongst registered participants who have actively engaged in the contest during the previous week.

Walking Registration

2024 Host Family Applications Open!



What: 2024 Inbound Host Family Applications have opened!

Increase: Due to the popularity of this exchange here in Michigan we have been approved to increase from only 13 participants this past year to 20 in 2024

When: Arrival (tentative) in Grand Rapids from July 21 to August 16

How: A host family completes the States' 4-H International Exchange Programs online application and have a youth to match as a host brother/sister (be within 3 years of age), be Michigan 4-H adult Gold Volunteers, participate in an interview and home visit process.

Applications to host: www.states4hexchange.org

Questions: contact Jan Brinn brinn@msu.edu or Co-Coordinator John Wurm wurmj@msu.edu.

Learn More

County Calendar

MAY 13

Wexford Whatever's / The Grands Meeting

5 pm | Wexford County Fair Grounds

Join Makayla to learn how to raise, show, and sell animals. Ages 5-19

MAY 16

Northern District Fair Board Meeting

6 pm | Fair Office (199 E 13th St. Cadillac)

Volunteers are needed to make the fair a success. Monthly meetings are held on the 3rd Thursday at 6 pm.

MAY 18

Exploration Days Orientation

2 pm | The Pines Bowling Alley

All members attending Exploration Days are required to attend orientation.

MAY 18

Missaukee Cluck, Hop, & Wiggle Show

10 AM | Falmouth

**MAY 20-
JUNE 2**

4-H Office Closed

Kate will be attending the 4-H Military Partnership Conference in D.C. and taking a week's vacation before diving into summer programming. She will not be available to assist you, but our MSU Extension office will still be open.

MAY 21

High Horizons 4-H Club First Meeting

TBD | Fairboard Office

Join Candy to learn about Rabbits, Poultry, and Goats. Ages 5-19

MAY 22

Wild Ones Club Meeting

5:30 pm | Carl T Johnson Center

Join Kate on the 2nd and 4th Wednesdays of each month for fun hands-on adventures and activities relating to nature. Ages 5-19. *Seeking New Leader*

MAY 28

Wexford Leaders Council Meeting

5:30 pm | TBD

Wexford County Volunteers, members, and parents plan events, support scholarships, and direct the program into the future! Please join us.

MAY 30

Spot On Shooting Club Meeting

6:30 pm | Cadillac Sportsmans Club

Learn to use the air rifle in this joint club with Missaukee County 4-H. Ages 9-19

[Click Here for Full List of Statewide Events](#)

Wexford County 4-H
231-779-9480
Kingka26@msu.edu
[Wexford County 4-H](#)

Connect with us

 **4-H GROWS HERE**



MICHIGAN STATE
UNIVERSITY | Extension

MSU is an affirmative-action, equal-opportunity employer, committed to achieving excellence through a diverse workforce and inclusive culture that encourages all people to reach their full potential. Michigan State University Extension programs and materials are open to all without regard to race, color, national origin, gender, gender identity, religion, age, height, weight, disability, political beliefs, sexual orientation, marital status, family status or veteran status. Issued in furtherance of MSU Extension work, acts of May 8 and June 30, 1914, in cooperation with the U.S. Department of Agriculture. Quentin Tyler, Director, MSU Extension, East Lansing, MI 48824. This information is for educational purposes only. Reference to commercial products or trade names does not imply endorsement by MSU Extension or bias against those not mentioned

Wexford County 4-H | 9600 E 13th Street, Cadillac, MI 49601

[Unsubscribe kingka26@msu.edu](#)

[Update Profile](#) | [Constant Contact Data Notice](#)

Sent by kingka26@msu.edu powered by



Try email marketing for free today!